



Traffic Gate

The A-SAFE Traffic Gate offers versatile protection across various applications such as goods in/out access and loading bay protection.

It has been designed with ease of use in mind by utilizing a gas-assisted mechanism that ensures the weight of the rail is always supported. When in a closed position, the rail is secured by a pin to ensure maximum stability and durability during impacts.

Available in 3 different sizes to suit a range of workplace applications.





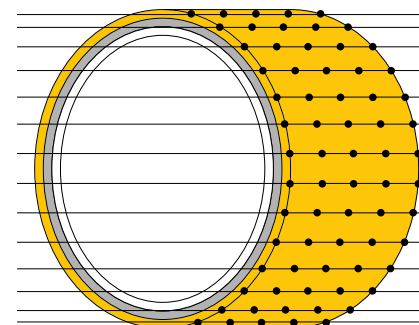
MEMAPLEX™

Ultimate Strength Polymer

created from an exclusive composition of the most sophisticated polyolefins and rubber additives, expertly blended for unequalled strength and flexibility.

Advanced Engineering

Molecular reorientation during manufacturing creates a unique built-in memory that enables the Traffic Gate to fully recover following impacts.



Revolutionary 3-Layered Material

- Inner strengthening core
- Central impact absorption zone
- Outer UV stabilised colour layer

Suitability

Vehicle



Manual pallet truck



Electric pedestrian truck



Electric pedestrian stacker



Electric high reach truck



Horizontal order picker



Lightweight counterbalance FLT



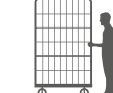
Very narrow aisle FLT



Heavy duty counterbalance FLT



Engine counterbalance heavy duty FLT

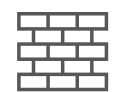


Frame roll container

Application



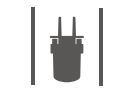
Goods In/Out



Suitable for heavier vehicles



Pedestrian Segregation



Traffic Segregation



Traffic and Pedestrian Segregation

*Non-standard Stainless Steel variant is available upon request, with an extended lead time.

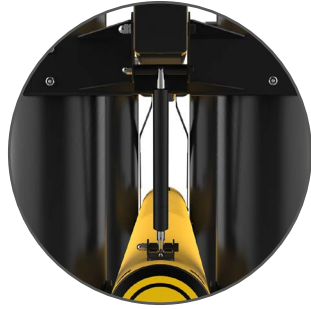


The Traffic Gate provides a huge return on investment from incident prevention and downtime avoidance as vehicles and floors do not need replacing or repair after impacts.

Features and benefits



Large operating handles make the gate easy to lift and close.



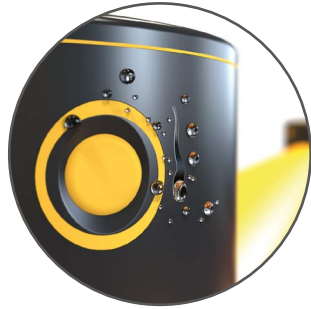
The gas-assisted lift is designed to ensure a wide range of employees can lift the rails.



The positive lock feature ensures the gate can be lifted and locked securely into position.



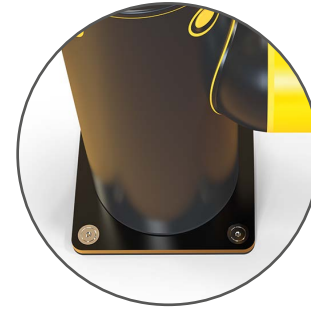
Self coloured and UV stabilised for continued visibility and long lasting aesthetics with no repainting.



Food safe, wipe-clean, water resistant surface.



Advanced strength polymer, expertly blended for unequalled strength and flexibility.



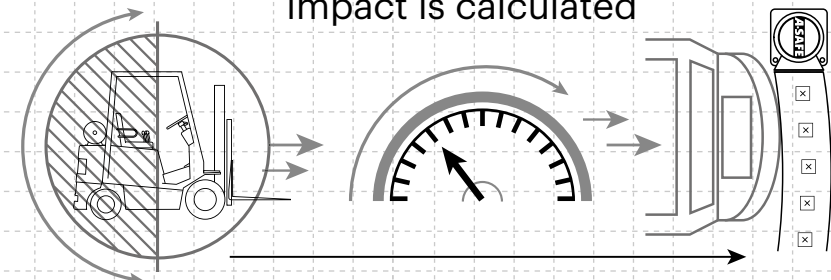
Zinc nickel, electrophoretic coating on base plates as standard, provides advanced protection.



Optional Sign Caps can be applied to the gate posts to provide additional health and safety messages.

Technical Information

How the energy from a vehicle impact is calculated



$\frac{1}{2} \text{ Mass} \times \text{Speed}^2 = \text{Joules}$

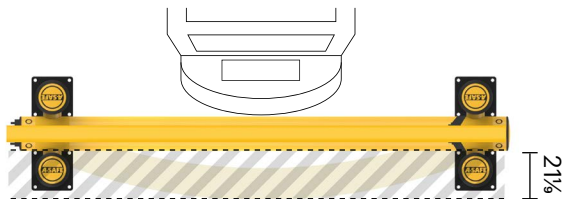
Tested Impact Energy

14,000 Joules

3.6 Ton vehicle and speed
x 6.5 mph impact

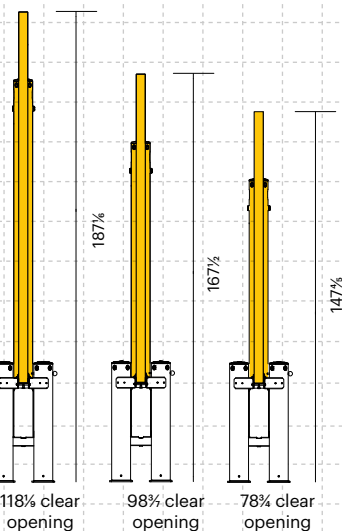
Mid Rail 90° Impact on
78% inch Post Centres

Deflection at Max Energy - 21% inches
78% inch opening

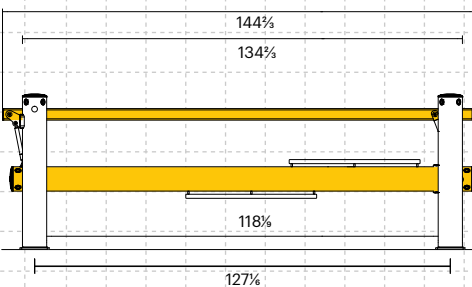


Dimensions (inches)

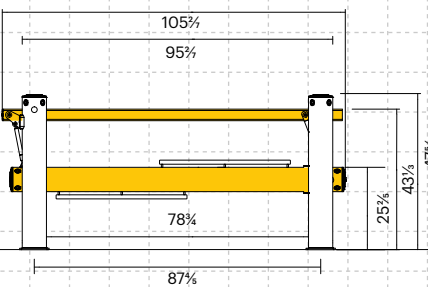
Side (Open)



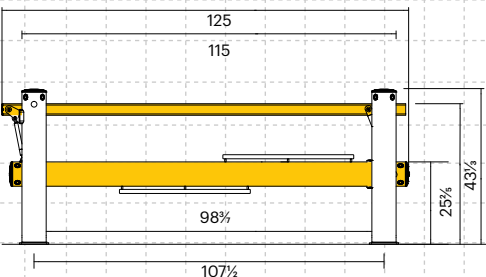
Front
118% clear opening



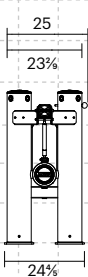
78% clear opening



98% clear opening



Side (All variants)



Base (All variants)



Material Properties	MEMAPLEX™
Temperature Range	14°F to 122°F
Ignition Temperature	698°F to 734°F
Flash Point	662°F to 698°F
Toxicity	Not Hazardous
Chemical Resistance	Excellent - ISO/TR 10358
Weathering Stability (Grey Scale)	5/5*
Light Stability (Blue Wool Scale)	7/8**
Static Rating (Surface Resistivity)	10 ¹⁵ - 10 ¹⁶ Ω

* Weathering scale 1 is very poor and 5 is excellent

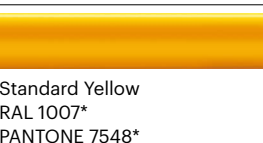
** Light stability scale 1 is very poor and 8 is excellent

Post Options



Standard Black
RAL 9005*
PANTONE Black

Rail Options



Standard Yellow
RAL 1007*
PANTONE 7548*

Color Combinations

*Please note that the RAL and PANTONE colors listed are the closest match to standard A-SAFE colors, but may not be exact matches of the actual product color and should be used for guidance only.

